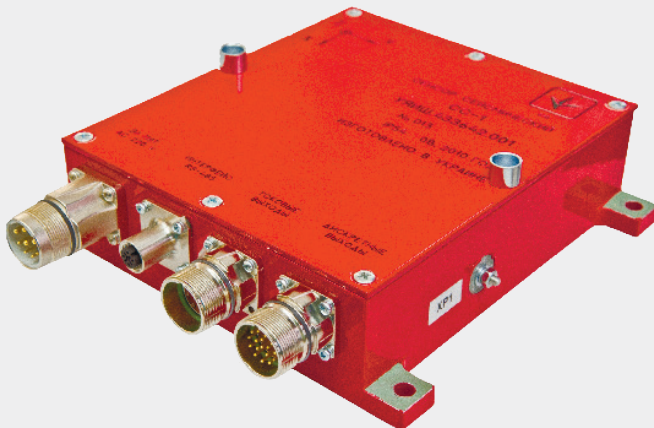


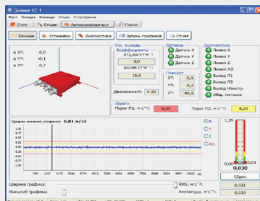
SEISMIC SENSOR (SS-1)

PRODUCT HIGHLIGHTS

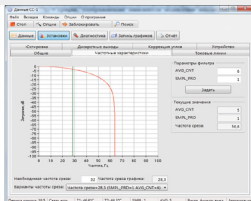
- ▶ Impact-resistant technology;
- ▶ Self-diagnostics features:
 - ▶ diagnostics of board supply voltage
 - ▶ diagnostics of sensor supply voltage
 - ▶ diagnostics of sensor's micromechanical structure
 - ▶ diagnostics of sensor's chip temperature
 - ▶ diagnostics of the sensor setting parameters
 - ▶ diagnostics of the rate of acceleration signal growth by all instrumentation channels X, Y, Z
 - ▶ diagnostics of integrity of the module software code
 - ▶ diagnostics of Ax, Ay, Az, AO output current circuits integrity
- ▶ Suppression system of industrial mechanical influence on each channel of threshold acceleration;
- ▶ Flexible adjustment of amplitude-frequency characteristics of the sensor;
- ▶ Setup, remote monitoring and remote testing using computer (HSI software) by means of digital RS-485 communication interface;
- ▶ 3 discrete output channels (acceleration - P1, P2 and fault);
- ▶ 4 analog output channels (Ax, Ay, Az, AO).



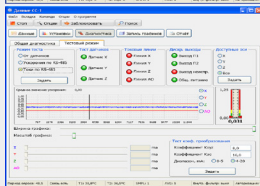
Program main page



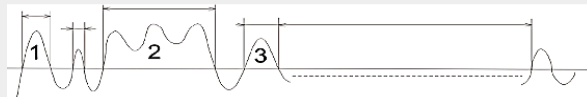
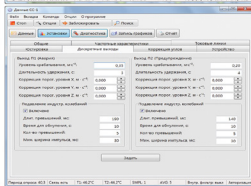
Frequency range setup



Testing



Page of configuring of industrial disturbances suppression



Configuring of industrial disturbances suppression

TECHNICAL SPECIFICATIONS

Range of measured accelerations	0.05 – 17 m/s ²
Frequency range	0.05 – 32 Hz
Factors of transformation accelerations to output current	0.8 - 8 mAs ² m ⁻¹ (AP(X), AP(Y), AP (Z)); 0.8 – 16 mAs ² m ⁻¹ (AO) configurable by HSI software
Accuracy of transformation accelerations to output current	± 5% (0.05 – 22 Hz)
Number of analog outputs	4 (AP(X), AP(Y), AP (Z), AO)
Current range of analog outputs	0 – 5 mA or 4 – 20 mA, configurable by HSI software
Number of discrete outputs	3 (set-points of acceleration levels - P1, P2; diagnostics)
Maximum switching power	60 W
Isolation	power supply, discrete outputs, analog outputs, RS-485 are galvanic-isolated
Self-diagnostics functions	value range checking, wire break detection, integrity checks etc.
Sensor power supply / consumption	220 V AC / 24 V DC, depending on version, 5,5 W
Operating temperature	-10 – +50 °C
Dimensions	190 (L) × 218 (W) × 59 (H) mm
Weight	2 kg